



# Destination WhiteCliffsCountry

**UKinbound FAM Trip**  
Thursday 8<sup>th</sup> July 2021

Chris Townend,  
Strategic Tourism & Visitor Economy Manager,  
Dover District Council

# WHITE CLIFFS COUNTRY

- Great connections to Europe and UK
- World-famous, iconic coastline
- Beautiful countryside
- Warm, dry climate
- Famous history & heritage sites
- New bookable visitor experiences
- Fantastic food and drink offer



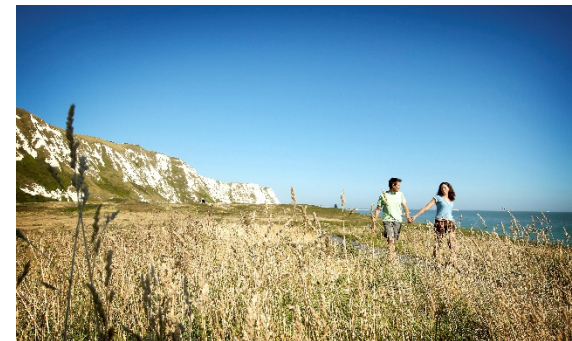
# ESCAPE THE EVERYDAY





# VISIT DOVER

- Cliff top and coastal routes and trails
- Dover Castle and Wartime Tunnels
- History and Heritage
- Exciting sporting experiences
- Famous military history
- Waterfront dining, amazing views





# DISCOVER DEAL

- Gem of an historical seaside town
- Famous maritime connections
- Great range of heritage attractions
- Multi-award-winning location
- Wonderful independent restaurants
- Vibrant arts scene
- Strong events calendar





# EXPLORE SANDWICH

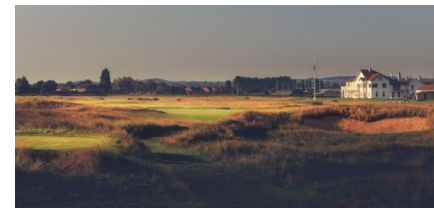
- One of the best-preserved medieval towns in Britain
- Home to Sandwich' very own Magna Carta
- One of the famous Cinque Ports
- Golfing capital of Kent!
- Traditional country inns
- Exciting annual events calendar





# KENT'S GOLF COAST

- Royal St George's Golf Club
- Prince's Golf Club & Hotel
- Royal Cinque Ports Golf Club
- Walmer & Kingsdown Golf Club



# THE ROAD TO THE 149<sup>TH</sup> OPEN





# OUTSTANDING EXPERIENCES

- History and Heritage
- Landscape and Nature
- Culture and Art
- Food and Drink
- "Live like a local"
- Walking, Cycling and Cruise
- Accommodation (for all budgets)





# TAMASIN JARRETT, BETTESHANGER PARK





# PRODUCED IN WHITE CLIFFS COUNTRY

- Brewery and Vineyard tasting tours
- Home to amazing quality food producers
- New food and drink experiences
- New story map trails



# JILL MARTIN, KENTISH KNOCKERS





# PHILLIP WATTS, BARNSOLE VINEYARD





# TONY BROUN, SHEPHERD NEAME





KEITH MORRISON,  
SOLLEY'S FARM AND ICE CREAM PARLOUR

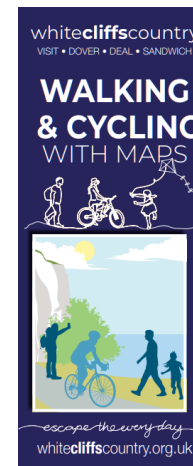
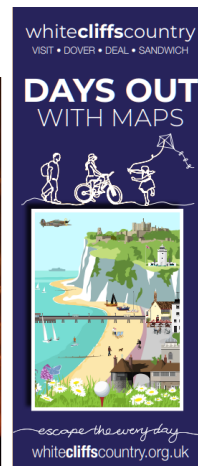
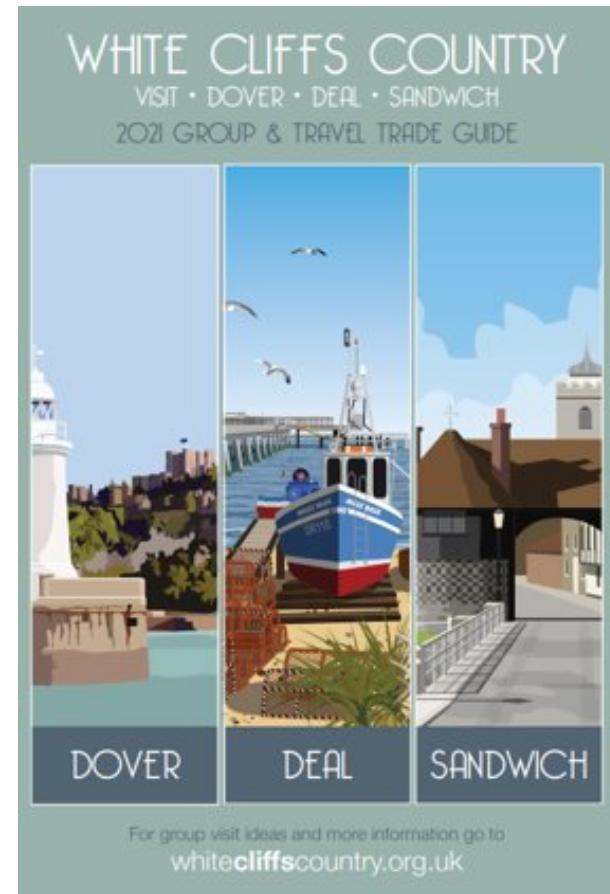


# HAPPY TO HELP

- Itinerary ideas
- Leaflets, maps and Travel Trade Guide
- Information, guidance and support
- Introduction to our Trade partners

## MORE INFORMATION

- [www.whitecliffscountry.org.uk](http://www.whitecliffscountry.org.uk)
- + 44 (0) 1304 201066
- [vic@dover.gov.uk](mailto:vic@dover.gov.uk)





# THANK YOU



## ENJOY

Stay a little longer in  
whitecliffscountry

[www.whitecliffscountry.org.uk](http://www.whitecliffscountry.org.uk)



## DEAL

Explore this maritime town in  
whitecliffscountry

[www.whitecliffscountry.org.uk](http://www.whitecliffscountry.org.uk)



## DOVER

Visit this historic town in  
whitecliffscountry

[www.whitecliffscountry.org.uk](http://www.whitecliffscountry.org.uk)



## SANDWICH

Discover this medieval town in  
whitecliffscountry

[www.whitecliffscountry.org.uk](http://www.whitecliffscountry.org.uk)

